



GAT MONTHLY MEMBERSHIP PROGRESS REPORT

Results as of: 3/31/2023

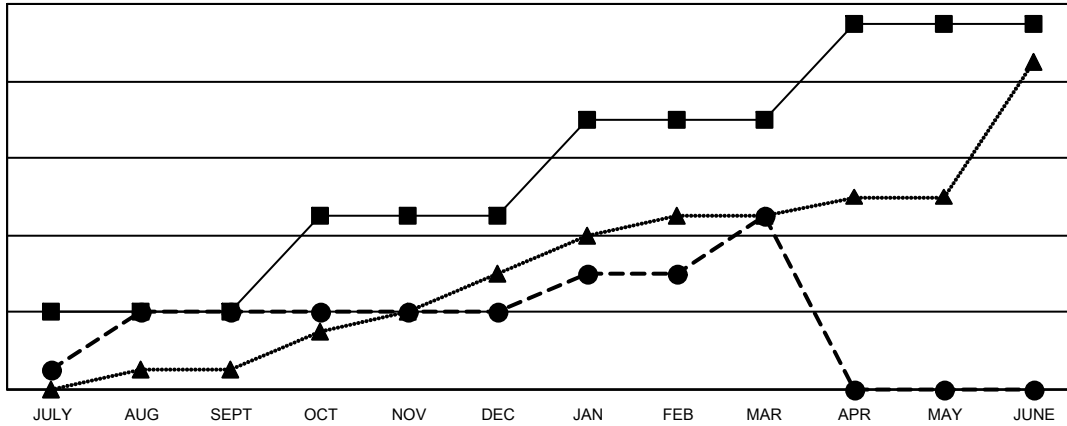
Multiple District 411

LOCATION: KENYA AFRICA

Clubs			
RESULTS FOR 2022-2023			
QUARTER	NEW CLUB GOAL	NEW CLUBS	DROPPED CLUBS
JULY/AUG/SEPT	4	4	1
OCT/NOV/DEC	5	0	9
JAN/FEB/MAR	5	5	2
APR/MAY/JUNE	5	0	0

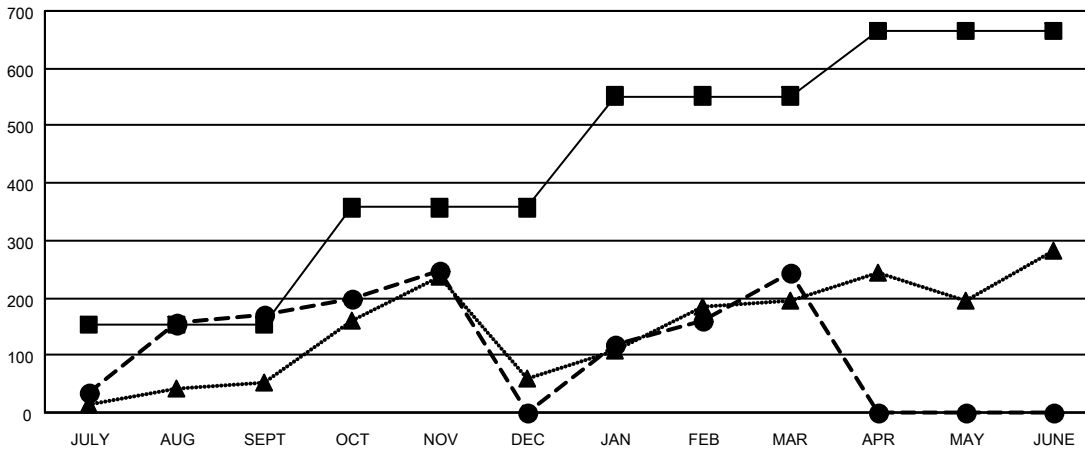
Members			
RESULTS FOR 2022-2023			
QUARTER	MEMBER GROWTH NET GOAL	MEMBER GROWTH ACTUAL	DROPPED MEMBERS ACTUAL (including transfers)
JULY/AUG/SEPT	152	269	95
OCT/NOV/DEC	205	216	382
JAN/FEB/MAR	195	400	117
APR/MAY/JUNE	112	0	0

GOALS AND ACTUAL NEW CLUBS CUMULATIVE



- - CURRENT YEAR GOALS FOR NEW CLUBS
- - CURRENT YEAR ACTUAL NEW CLUBS
- ▲ - LAST YEAR ACTUAL NEW CLUBS

GOALS AND ACTUAL MEMBERS CUMULATIVE



- - MEMBER GROWTH NET GOAL
- - MEMBER GROWTH ACTUAL
- ▲ - LAST YEAR MEMBERSHIP ACTUAL

DROPPED CLUBS: 12	
DROPPED MEMBERS	
DECEASED	12
CLUB CANCELLED	223
OTHER	359
TOTAL	594

100 CLUBS OF 152 ADDED 1 OR MORE NEW MEMBERS

[CLICK HERE FOR CUMULATIVE MEMBERSHIP DATA](#)

GENDER DISTRIBUTION	
MALE	2,614 (60.54%)
FEMALE	1,697 (39.30%)
NON BINARY	0 (0.00%)
PREFER NOT TO ANSWER	7 (0.16%)
TOTAL FAMILY UNIT MEMBERS	1,311
FAMILY MEMBERS PAYING HALF DUES	815